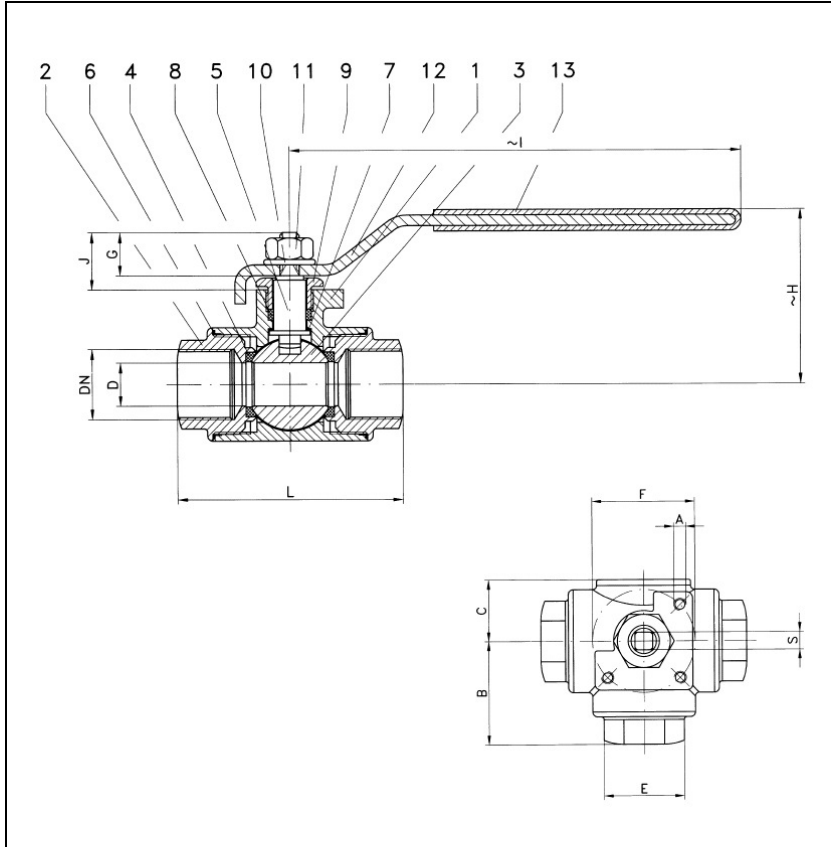


BALL VALVES RK-PROBALL

KH 3W M, 1/4" - 2", PN40/63



Ball valves RK-Proball KH 3W all sizes are also available with pneumatical, electrical or hydraulic actuators.

3-way ball valve with threaded ends acc. to EN 10226-1 / EN ISO 228-1 reduced bore face to face acc. to producers standard

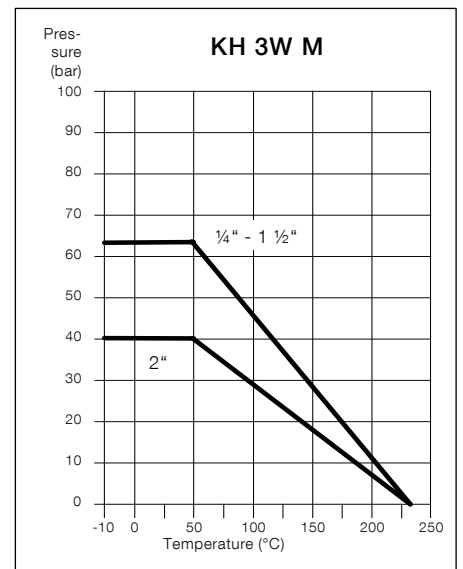
Specification:

3-way ball valve with threaded ends acc. to EN 10226-1 / EN ISO 228-1, face to face dimensions acc. to producers standard, reduced bore, ball with L- or T-bore, blow-out-proof stem, body material stainless steel (1.4408), free of non ferrous metals, seat KF, stem packing KF, DIN/ISO top flange design, approved by PED, with lever.

Marking: RK-Proball
Type: KH 3W M-1.4408

Port Type	1	2	3	4
L				
T				

No.	Part	Material
1	body	1.4408
2	cap	1.4408
3	ball	1.4408
4	seat	KF
5	stem	1.4408
6	seal	KF
7	washer	PTFE
8	stem packing	KF
9	gland nut	1.4301
10	spring washer	1.4301
11	nut	1.4301
12	lever	1.4301
13	insulation cover	Vinyl



Dimensions

DN inch	PN	dimensions (mm)													torque Nm	weight kg
		D	L	B	C	H	I	E	F	A	S	G	J			
1/4"	63	9.5	78	39.5	22	54	157	29	42	M5 x 0,8	9	5.2	10	5	0.8	
3/8"	63	9.5	78	39.5	22	54	157	29	42	M5 x 0,8	9	5.2	10	5	0.8	
1/2"	63	12.0	78	39.5	22	54	157	29	42	M5 x 0,8	9	5.2	10	5	0.8	
3/4"	63	15.0	87	44.0	28	63	180	35	50	M6 x 1,0	9	7.1	13	8	1.2	
1"	63	20.0	107	54.0	31	77	210	41	50	M6 x 1,0	9	12.0	22	14	1.7	
1 1/4"	63	25.0	122	62.0	34	78	234	53	50	M6 x 1,0	11	17.9	27	17	2.8	
1 1/2"	63	32.0	132	67.5	40	82	234	58	70	M8 x 1,25	11	17.9	27	37	4.0	
2"	40	40.0	160	82.0	48	88	234	73	70	M8 x 1,25	14	24.0	27	48	6.8	

**Ordering example:
KH 3W M, 2", PN40, 1.4408**